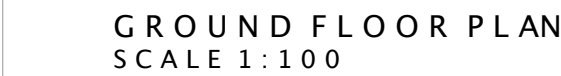
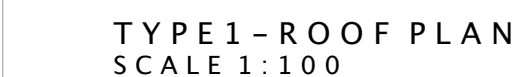
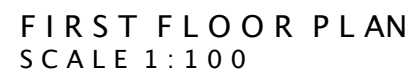
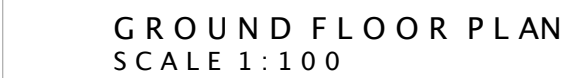


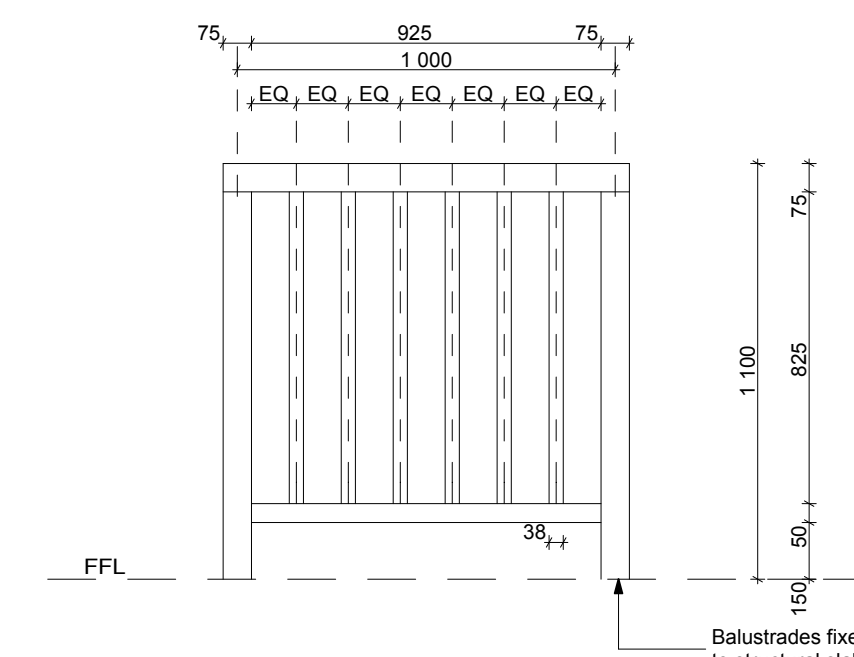
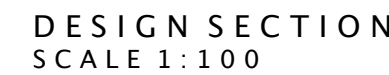
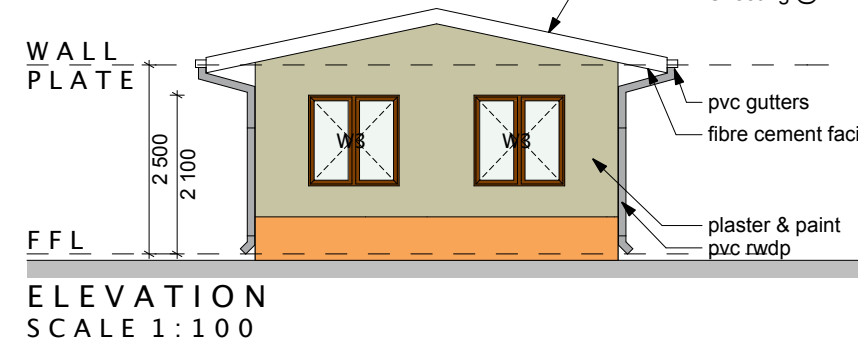
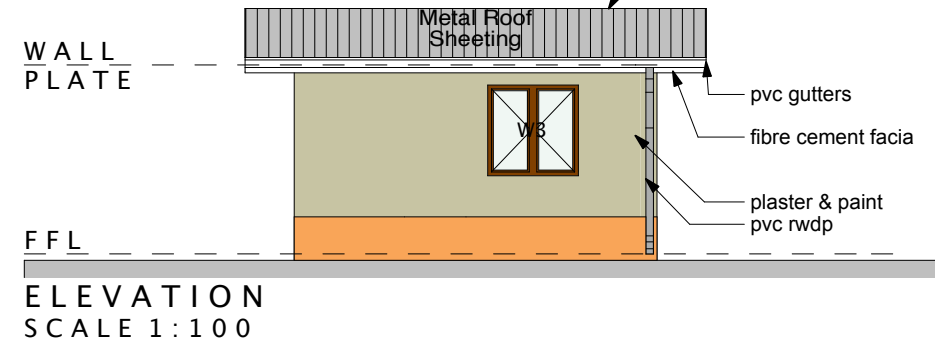
1 BEDROOM UNIT X 1 BEDROOM UNIT



2 BEDROOM UNIT X 2 BEDROOM UNIT



OPEN PLAN OFFICE / KITCHEN / KITCHENETTE

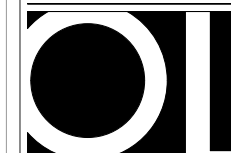


BALUSTRADE DETAIL
SCALE 1:20

- NOTES:**
1. THE DESIGN ON THIS DRAWING IS COPYRIGHT AND REMAINS THE PROPERTY OF THE ARCHITECT.
 2. ALL WORK IS TO BE CARRIED OUT IN ACCORDANCE WITH THE N.B.R. SANS 10400 AND LOCAL AUTHORITY REGULATIONS
 3. THE DRAWING IS NOT TO BE SCALED
 4. ANY DISCREPANCIES ARE TO BE IMMEDIATELY REPORTED TO THE ARCHITECT
 5. ALL DIMENSIONS AND LEVELS ARE TO BE CHECKED ON SITE PRIOR TO CONSTRUCTION.



DEPARTMENT OF HUMAN SETTLEMENTS
KWAZULU NATAL

[illegible]

ARCHITECT:
Osmond Lange
Architects and Planners
(Pty) Ltd
Durban

Postal: PO Box 1450, Kloof, 3640
Address: Black A, 1 on Langford, Langford Road, Westville
E-mail: durban@co-1.co.za
Tel: +27 (0) 31 266 0750 / 0861 326 652
Fax: +27 (0) 31 266 0751

PROJECT:

STANDARDS FOR COMMUNITY RESIDENTIAL
UNITS
FOR DEPARTMENT OF HUMAN SETTLEMENTS

DRAWING TITLE:
Unit Type 1 & 2

BUILDING CLASSIFICATION		CLIMATIC ZONE	
H3		####	
	RESPONSIBLE PERSON	DATE	APPROVED
DESIGN	HJF	2014/09/19	
DRAWN	HJF		

FOR INFORMATION

DRAWING PATH
/Volumes/0bn XS Data/004 PROJECTS/0339 Dolt's CRU TYPLOGIES/DRAWINGS/01 OSMOND LANGE DRAWINGS/00
ELEMENTAL/0340 CRU Typologies Sketch Plan Elemental Rev E.dgn

SCALE	SHEET SIZE
1:100	A1

PROJECT No. | DRAWING NUMBER
D340 A D340 A 100

REVISION
E